

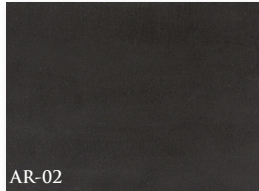
SPECCRETE® ACCENT RELEASE POWDER

ANTIQUING RELEASE AGENT FOR STAMPED CONCRETE APPLICATION



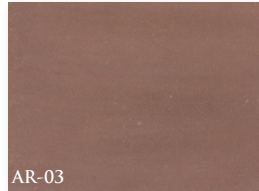
AR-01

SAN DIEGO BUFF



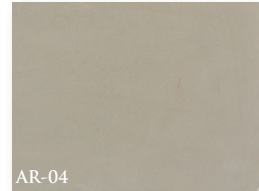
AR-02

GRAPHITE BLACK



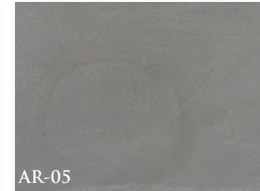
AR-03

RUSSETT



AR-04

SMOKE



AR-05

CHARCOAL GRAY



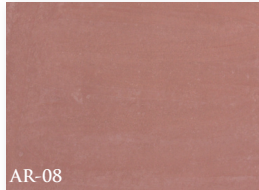
AR-06

BAJA RED



AR-07

NATURAL



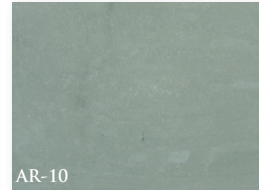
AR-08

BRICK RED



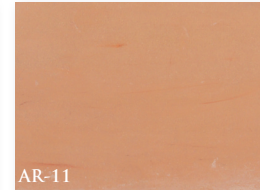
AR-09

MESA BUFF



AR-10

SLATE



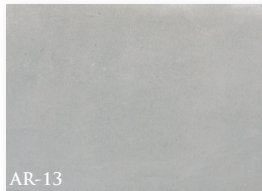
AR-11

COPPER



AR-12

PECAN TAN



AR-13

PEWTER



AR-14

KAILUA BROWN



AR-15

ADOBE SAND



AR-16

DARK WALNUT



AR-17

TERRA COTTA



AR-18

DESERT TAN

- THE SPECCRETE® ACCENT RELEASE POWDER SERIES IS AVAILABLE IN 18 SHADES
- PREVENTS ADHESION OF CONCRETE TO STAMPS OR TEXTURE MATS
- COLORS CAN BE INTER-MIXED TO CREATE MULTIPLE EFFECTS
- ALLOWS ANTIQUE EFFECT (DUAL COLOR TONE)

www.ConcreteEarth.com

NOTE: Examples shown here were applied to a light colored cement base. Variations in color can occur from differences in cement, aggregates, absorption rate, as well as the iron oxide pigments themselves. This color chart is for approximation purposes only.

SPECCRETE® ACCENT RELEASE POWDER

ANTIQUING RELEASE AGENT FOR STAMPED CONCRETE APPLICATION

PRODUCT DESCRIPTION: Speccrete® Accent Release Powder is a blend of fine pigments and water repelling additives designed to prevent freshly placed concrete from adhering to concrete texturing mats. Speccrete® Accent Release Powder transfers the details of the stamping mats to freshly placed concrete in matching or contrasting colors. Speccrete® Accent Release Powder is used on plain or integrally pigmented concrete, or in combination with Speccrete® Dry Shake Color Hardener.

BENEFITS:

- ALLOWS ANTIQUE EFFECT (DUAL COLOR TONE) ON CONCRETE SURFACE
- PREVENTS ADHESION OF CONCRETE TO STAMPS OR TEXTURE MATS
- PROVIDES ACCURATE DETAIL TRANSFER FROM STAMPS

DIRECTIONS FOR USE: Place, screed and float the concrete surface as required. When excess moisture is no longer evident, broadcast Speccrete® Accent Release Powder in a thin uniform layer over the concrete surface to be treated. Texture mats may be placed immediately following the Accent Release Powder application. Removal of the excessive Speccrete® Accent Release Powder can take place after the concrete is sufficiently set and the surface can not be damaged. Excess material may be swept from the surface and residual Speccrete® Accent Release Powder may be removed by using a *low setting* pressure washer with *light* scrubbing. **Care must be taken to not remove the surface concrete during this step.** After the concrete is allowed to dry (24 hour minimum wait period is suggested), apply a clear, non-yellowing acrylic sealer such as Stampsheen 350 to protect and enhance the newly placed textured concrete.

COVERAGE: The amount of Speccrete® Accent Release Powder used depends upon the desired depth of the texturing mat impression and the degree to which the concrete has set. Approximate coverage rate is 3 pounds per 100 square feet.

CAUTIONS & LIMITATIONS: FOR INDUSTRIAL/PROFESSIONAL USE ONLY. Cover and protect all surrounding areas where color is not desired. Be aware of wind conditions when spreading Speccrete® Accent Release Powder. In colder temperatures allow more time for the concrete to cure before removing the Accent Release Powder. Be careful not to stain surrounding areas with excess rinse water during removal of residual Speccrete® Accent Release Powder. The use of Concrete Earth's Accent Release Liquid is recommended for applications requiring a monotone "neutral" surface, for jobs where powders cannot be used due to the possible color contamination of surroundings, or for interior projects where wash off and rinse down is not a viable option. Contains synthetic iron oxide powders, avoid inhalation of dust. Wear gloves, safety goggles, and OSHA-NIOSH approved dust respirator during placement. Refer to product M.S.D.S. (Material Safety Data Sheet) for additional safety information. Do not take internally. Avoid prolonged contact with skin.

DISTRIBUTED BY:

